

Sequoia Union High School District Districting Public Forums

October 20, 25,
26, 2016

Douglas Johnson, President
National Demographics Corporation (NDC)

1. “At Large”

- ❑ Candidates can reside anywhere in the jurisdiction
- ❑ All voters vote for all elected officials

2. “By District”

- ❑ A candidate must reside in the district he/she wishes to represent
- ❑ Only voters in the given district vote on the person to represent them
- ❑ Voters only vote for a single elected official
- ❑ General Law school districts, such as Sequoia, may use 5 or 7 trustee areas

3. “From District,” Cumulative, limited, Ranked Choice alternatives

The California Voting Rights Act was written to specifically require by-district elections.

CVRA Statewide Impact

3

- Signed into law by Gov. Gray Davis in 2002
 - Suspended by Superior Court ruling in the Modesto case, but reinstated by appeals court in 2006.

- Makes it significantly easier for plaintiffs to win legal challenges to at-large election systems

- Switched (or in the process of switching) as a result of CVRA:
 - At least 135 school districts
 - 27 Community College Districts
 - 30 cities
 - 1 County Board of Supervisors
 - 8 water and other special districts.

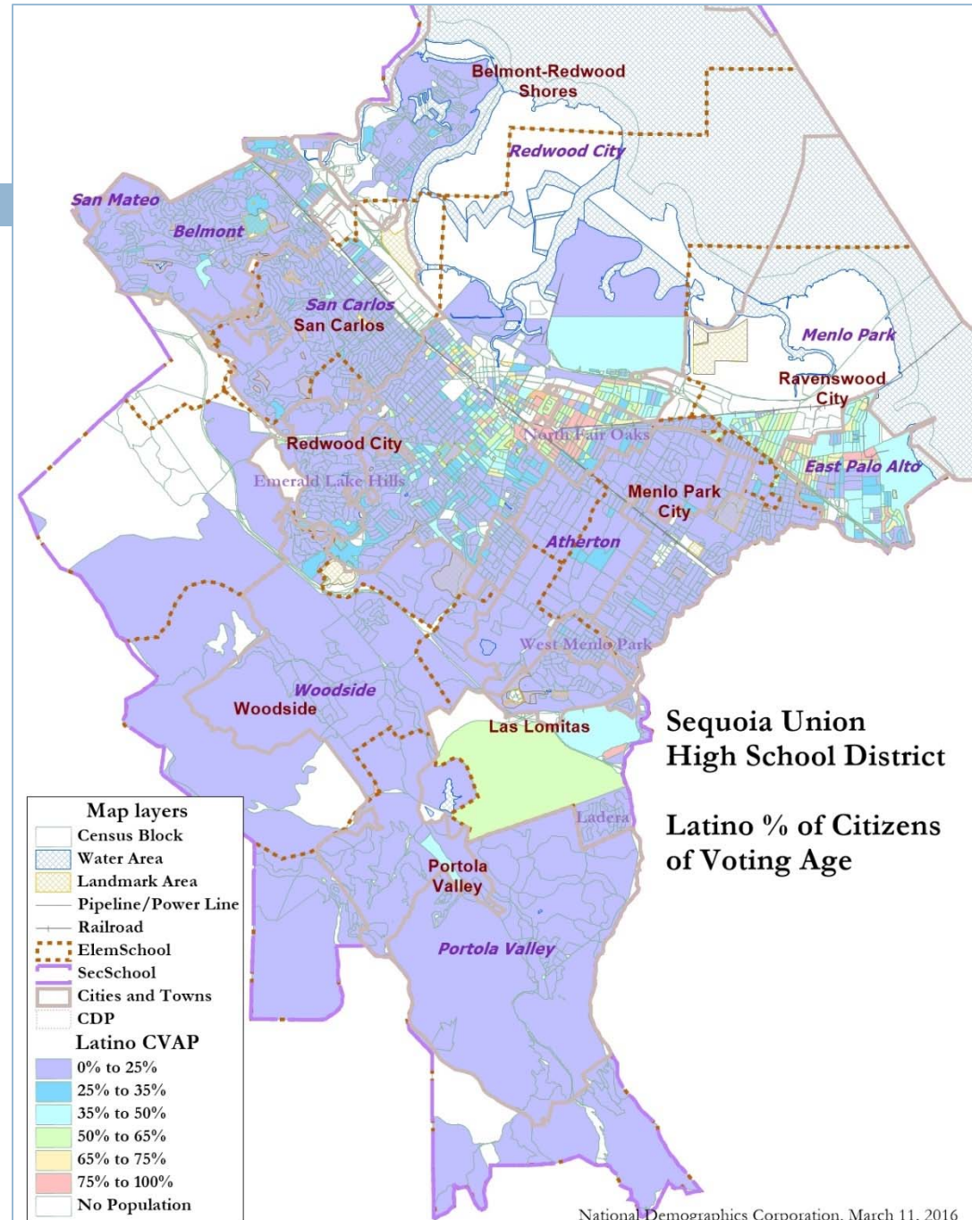
- Key decisions & settlements
 - Only Palmdale has gone to trial on the merits (the city lost)
 - Key settlements:
 - Palmdale: \$4.5 million
 - Modesto: \$3 million
 - Anaheim: \$1.1 million
 - Whittier: \$1 million
 - Santa Barbara: \$600,000
 - Tulare Hospital: plaintiff attorneys paid \$500,000
 - Madera Unified: plaintiff attorneys asked for \$1.8 million, but received about \$170,000
 - Hanford Joint Union Schools: \$118,000
 - Merced City: \$42,000
 - Placentia: \$20,000

Demographic Summary

Sequoia High School District

Race/Ethnic Profile	Count	Percent	ACS Profile	Count	Percent
Total Population	243,514		ACS Total Population	250,316	3%
Latino	73,413	30%	Age 0 - 19	66,352	27%
NH White	123,958	51%	Age 20 - 60	138,654	55%
NH Black/ African-American	9,475	4%	Age 60+	45,311	18%
NH Native American	931	0%	Age 65+	31,989	13%
NH Asian-American	29,181	12%	Immigrant	73,155	29%
NH Pacific Islander	4,095	2%	Naturalized	31,147	43%
NH Other	884	0%	Age 5+	232,895	
NH Multi-Race	1,577	1%	Speaks English at home	139,543	60%
Voting Age Population total	183,792		Speaks Spanish at home	59,738	26%
VAP Latino	49,476	27%	Speaks an Asian language at home	17,213	7%
VAP NH White	99,996	54%	Speaks other language at home	16,401	7%
VAP NH Black/ African-American	7,444	4%	Speaks English only "well" or less	39,118	17%
VAP NH Native American	741	0%	Age 25+	171,029	
VAP NH Asian-American	21,796	12%	Age 25+, no HS degree	21,607	13%
VAP NH Pacific Islander	2,805	2%	Age 25+, HS degree (only)	62,744	37%
VAP NH Other	517	0%	Age 25+, bachelor degree (only)	44,435	26%
VAP NH Multi-Race	1,017	1%	Age 25+, graduate degree (only)	42,243	25%
Citizen VAP total	150,026		Households	87,666	
CVAP Latino	26,894	18%	Child under 18 in Household	28,812	33%
CVAP NH White	93,864	63%	Income \$0-25k	9,282	11%
CVAP NH African-American	6,957	5%	Income \$25-50k	13,595	16%
CVAP NH Asian & Pacific Islander	20,786	14%	Income \$50-75k	12,003	14%
CVAP Other (incl. Nat. Amer. & Pac. Isl.)	1,524	1%	Income \$75-200k	32,615	37%
Voter Registration (Nov. 2014)	125,013		Income \$200k+	20,171	23%
Latino Reg	18,374	15%	Housing units	91,966	
Asian-Surnamed Reg.	8,772	7%	Single-Family	63,306	69%
Filipino-Surnamed Reg.	1,237	1%	Multi-Family	28,660	31%
Voters Casting Ballots (Nov. 2014)	61,665	49%	Vacant	4,300	5%
Latino voters	5,306	9%	Occupied	87,666	95%
Asian-Surnamed voters	3,764	6%	Rented	35,187	40%
Filipino-Surnamed voters	453	1%	Owned	52,479	60%
Voters Casting Ballots (Nov. 2012)	100,230	163%			
Latino voters	12,182	20%			
Asian-Surnamed voters	6,256	10%			
Filipino-Surnamed voters	902	1%			

Latino CVAP Distribution





6

Districting Process

October 20, 25, 26, 2016

Process

7

Date	Action
Step 1	Presentation on map-drawing criteria, process and demographics; Board consideration of Criteria resolution, start of election waiver process, and start consideration of moving to even-year elections
Step 2	Initial Board hearing to discuss draft plans: Board direction on which maps to take to public forums
Step 3	Public Forums on Draft maps (October 20, 25 and 26)
Step 4	Board adoption of Trustee Areas resolution
Step 5	Board consideration of election waiver
Step 6	County Committee on School District Organization hearing and vote on Board-adopted trustee area map
Step 7	State Board of Education vote on election waiver
Nov. 2017 or 18	Two Areas hold first by-area elections
Nov. 2019 or 20	Remaining Three Areas hold by-area elections

1. **Engage** the public
 2. **Educate** the public
 3. **Empower** the public
-
- Public comment hopefully will include:
 - Definitions of neighborhoods and “communities of interest”
 - Suggesting individual districts or entire plans
 - Sharing opinions on plans

Districing Criteria

9

Federal Laws

- ❑ **Equal Population**
- ❑ **Federal Voting Rights Act**
- ❑ **No Racial Gerrymandering**

Traditional Redistricting Principles

- ❑ **Communities of interest**
- ❑ **Compact**
- ❑ **Contiguous**
- ❑ **Visible (Natural & man-made) boundaries**
- ❑ **Respect voters' choices**
- ❑ **Planned future growth**

Additional Board preferred criteria:

- Trustee areas should “bisect” high school boundaries

- ❑ There are many ways to define communities
- ❑ Best way to define a neighborhood remains to hear from the people who live there
- ❑ Some examples of communities of interest could include:
 - ❑ School attendance areas; housing developments; neighborhoods around parks; horse-friendly neighborhoods
- ❑ Some communities want to be unified to maximize their voice in single election.
- ❑ Other communities (often school attendance areas and senior living communities) want to be divided so they have multiple representatives answering to them.





National Demographics Corporation

11

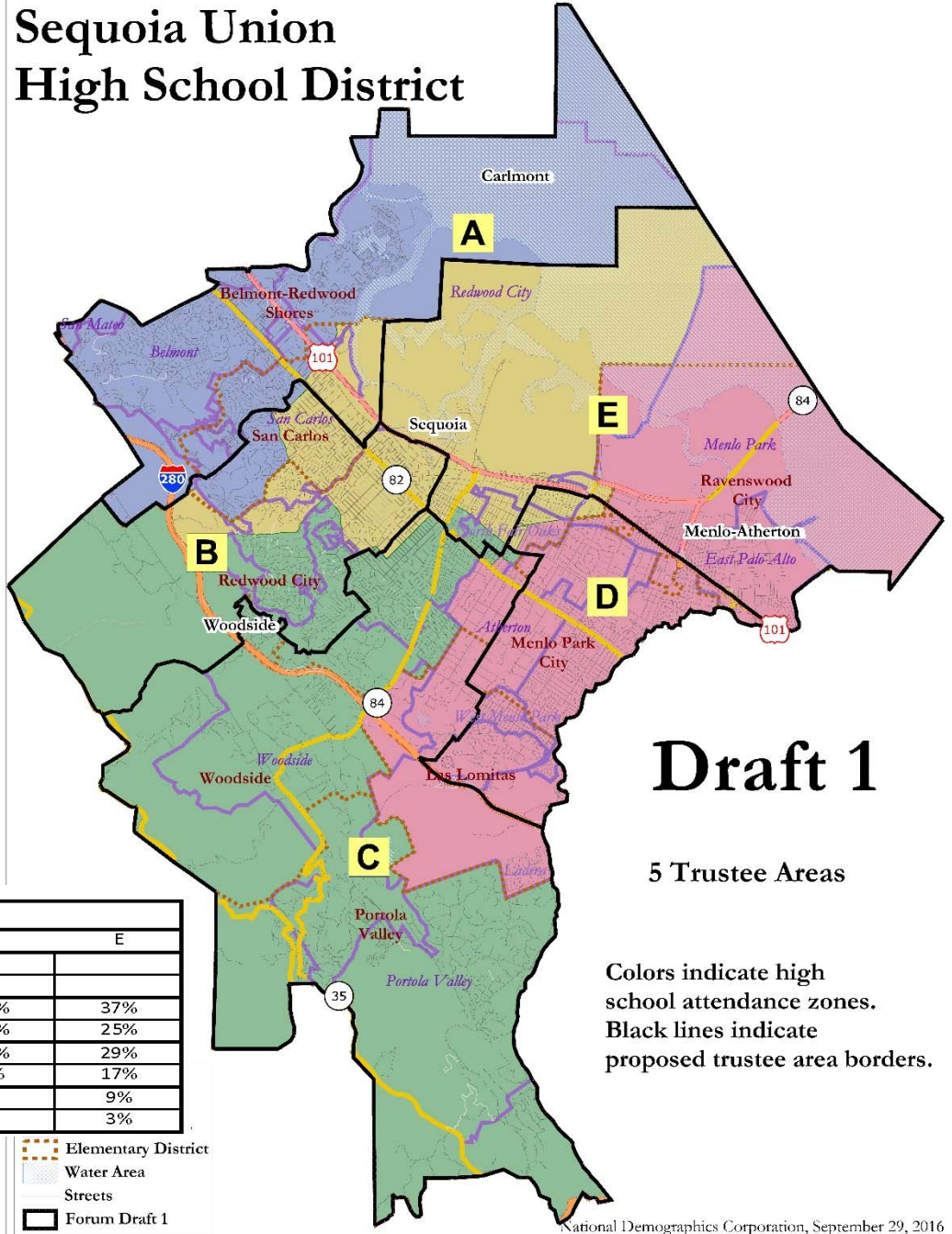
**Trustee Area Population
by High School Attendance Zone**

By Total Population Count					
Draft 1	A	B	C	D	E
Carlmont	48,470	7,096			
Menlo-Atherton			5,332	42,758	28,055
Sequoia	774	30,856	2,412	5,499	15,845
Woodside		11,108	40,169		5,140
Total	49,244	49,060	47,913	48,257	49,040

By Percentage of Total Population					
Draft 1	A	B	C	D	E
Carlmont	98%	14%			
Menlo-Atherton			11%	89%	57%
Sequoia	2%	63%	5%	11%	32%
Woodside		23%	84%		10%
Total	100%	100%	100%	100%	100%

**High School Zone divisions
by Trustee Area**

Draft 1						
School	Category	A	B	C	D	E
Carlmont	Total Population	87%	13%			
	Registered Voters	86%	14%			
Menlo-Atherton	Total Population			7%	56%	37%
	Registered Voters			10%	65%	25%
Sequoia	Total Population	1%	56%	4%	10%	29%
	Registered Voters	2%	69%	3%	9%	17%
Woodside	Total Population		20%	71%		9%
	Registered Voters		25%	72%		3%



Draft 1

5 Trustee Areas

Colors indicate high school attendance zones.
Black lines indicate proposed trustee area borders.

**Trustee Area Population
by High School Attendance Zone**

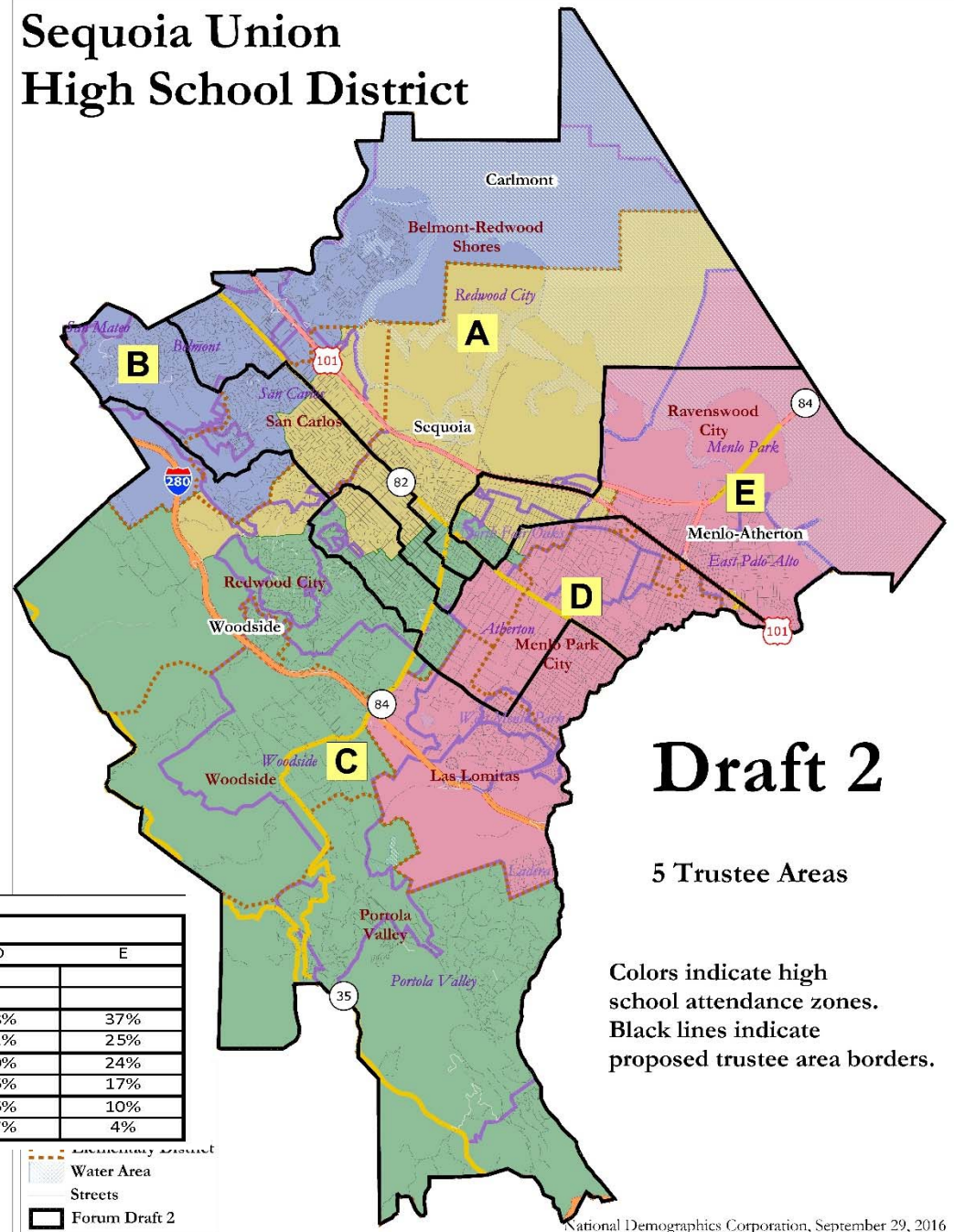
Draft 2	A	B	C	D	E
Carlmont	28,305	22,828	4,433		
Menlo-Atherton	0		19,261	28,829	28,055
Sequoia	14,753	18,317	3,023	5,752	13,541
Woodside	7,106	7,706	22,034	13,885	5,686
Total	50,164	48,851	48,751	48,466	47,282

Draft 2	A	B	C	D	E
Carlmont	56%	47%	9%		
Menlo-Atherton	0%		40%	59%	59%
Sequoia	29%	37%	6%	12%	29%
Woodside	14%	16%	45%	29%	12%
Total	100%	100%	100%	100%	100%

**High School Zone divisions
by Trustee Area**

Draft 2		A	B	C	D	E
Carlmont	Total Population	51%	41%			
	Registered Voters	48%	43%			
Menlo-Atherton	Total Population	0%		25%	38%	37%
	Registered Voters	0%		33%	42%	25%
Sequoia	Total Population	27%	33%	5%	10%	24%
	Registered Voters	19%	41%	8%	15%	17%
Woodside	Total Population	13%	14%	39%	25%	10%
	Registered Voters	7%	11%	51%	27%	4%

**Sequoia Union
High School District**





National Demographics Corporation

13

**Trustee Area Population
by High School Attendance Zone**

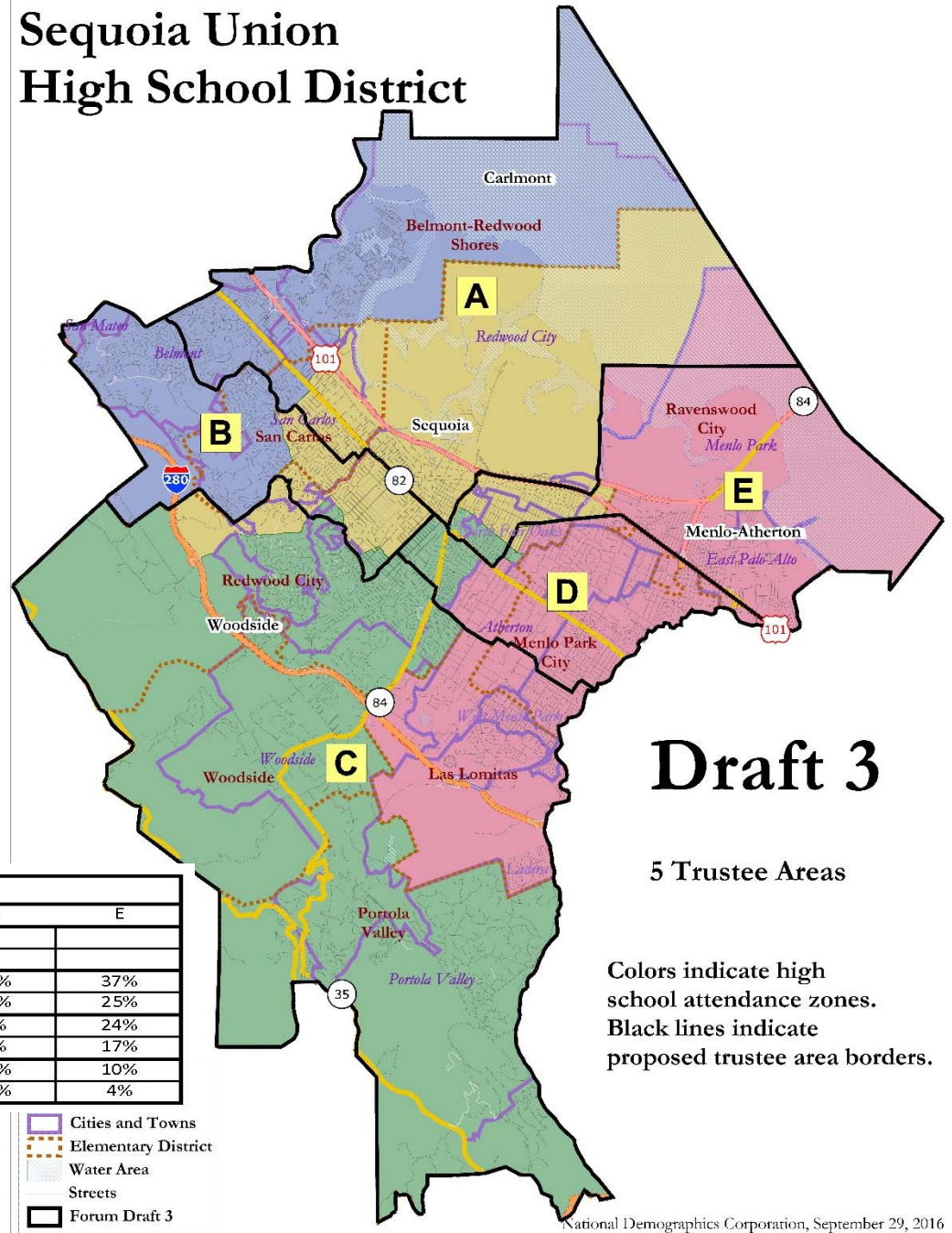
Draft 3	A	B	C	D	E
Carlmont	31,528	24,038			
Menlo-Atherton	0		15,297	32,793	28,055
Sequoia	17,211	22,770	1,151	713	13,541
Woodside		1,460	33,704	15,567	5,686
Total	48,739	48,268	50,152	49,073	47,282

Draft 3	A	B	C	D	E
Carlmont	65%	50%			
Menlo-Atherton	0%		31%	67%	59%
Sequoia	35%	47%	2%	1%	29%
Woodside		3%	67%	32%	12%
Total	100%	100%	100%	100%	100%

**High School Zone divisions
by Trustee Area**

Draft 3		A	B	C	D	E
Carlmont	Total Population	57%	43%			
	Registered Voters	54%	46%			
Menlo-Atherton	Total Population	0%		20%	43%	37%
	Registered Voters	0%		27%	48%	25%
Sequoia	Total Population	31%	41%	2%	1%	24%
	Registered Voters	28%	50%	4%	1%	17%
Woodside	Total Population		3%	60%	28%	10%
	Registered Voters		3%	74%	19%	4%

**Sequoia Union
High School District**



Draft 3

5 Trustee Areas

Colors indicate high school attendance zones.
Black lines indicate proposed trustee area borders.

- Cities and Towns
- Elementary District
- Water Area
- Streets
- Forum Draft 3

14

Trustee Area Population
by High School Attendance Zone

Draft 4	A	B	C	D	E	F	G
Carlmont	35,266	20,300	0				
Menlo-Atherton			0		15,248	26,659	34,238
Sequoia	0	14,598	17,894	22,181		713	
Woodside			16,336	13,658	19,433	6,990	
Total	35,266	34,898	34,230	35,839	34,681	34,362	34,238

Draft 4	A	B	C	D	E	F	G
Carlmont	100%	58%	0%				
Menlo-Atherton			0%		44%	78%	100%
Sequoia	0%	42%	52%	62%		2%	
Woodside			48%	38%	56%	20%	
Total	100%	100%	100%	100%	100%	100%	100%

High School Zone divisions
by Trustee Area

Draft 4		A	B	C	D	E	F	G
Carlmont	Total Population	63%	37%					
	Registered Voters	61%	39%					
Menlo-Atherton	Total Population			0%		20%	35%	45%
	Registered Voters			0%		27%	44%	29%
Sequoia	Total Population	0%	26%	32%	40%		1%	0%
	Registered Voters	0%	38%	35%	26%		1%	0%
Woodside	Total Population			29%	24%	34%	12%	0%
	Registered Voters			35%	11%	43%	11%	0%

Sequoia Union High School District

